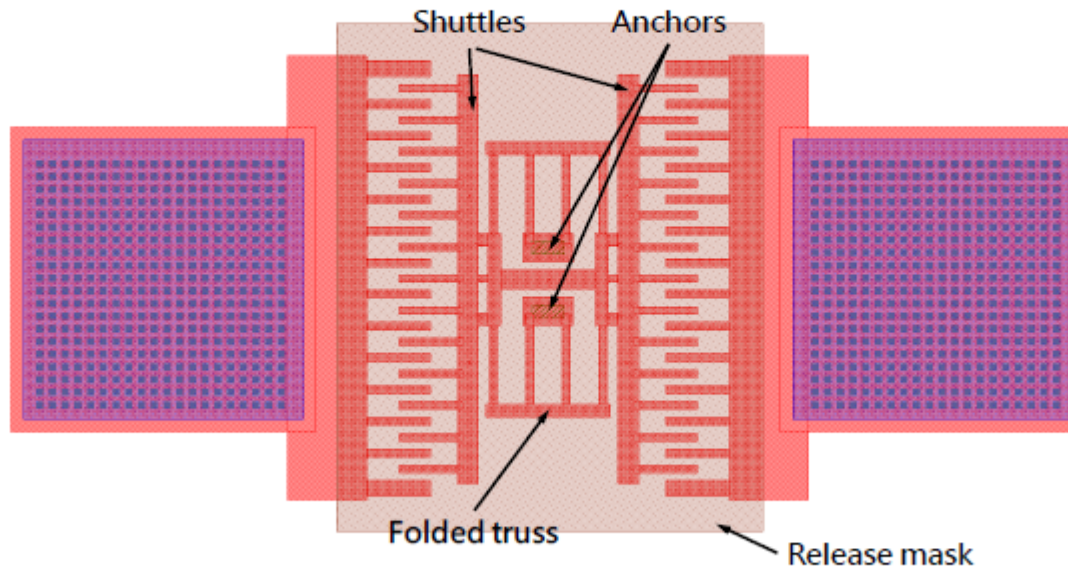


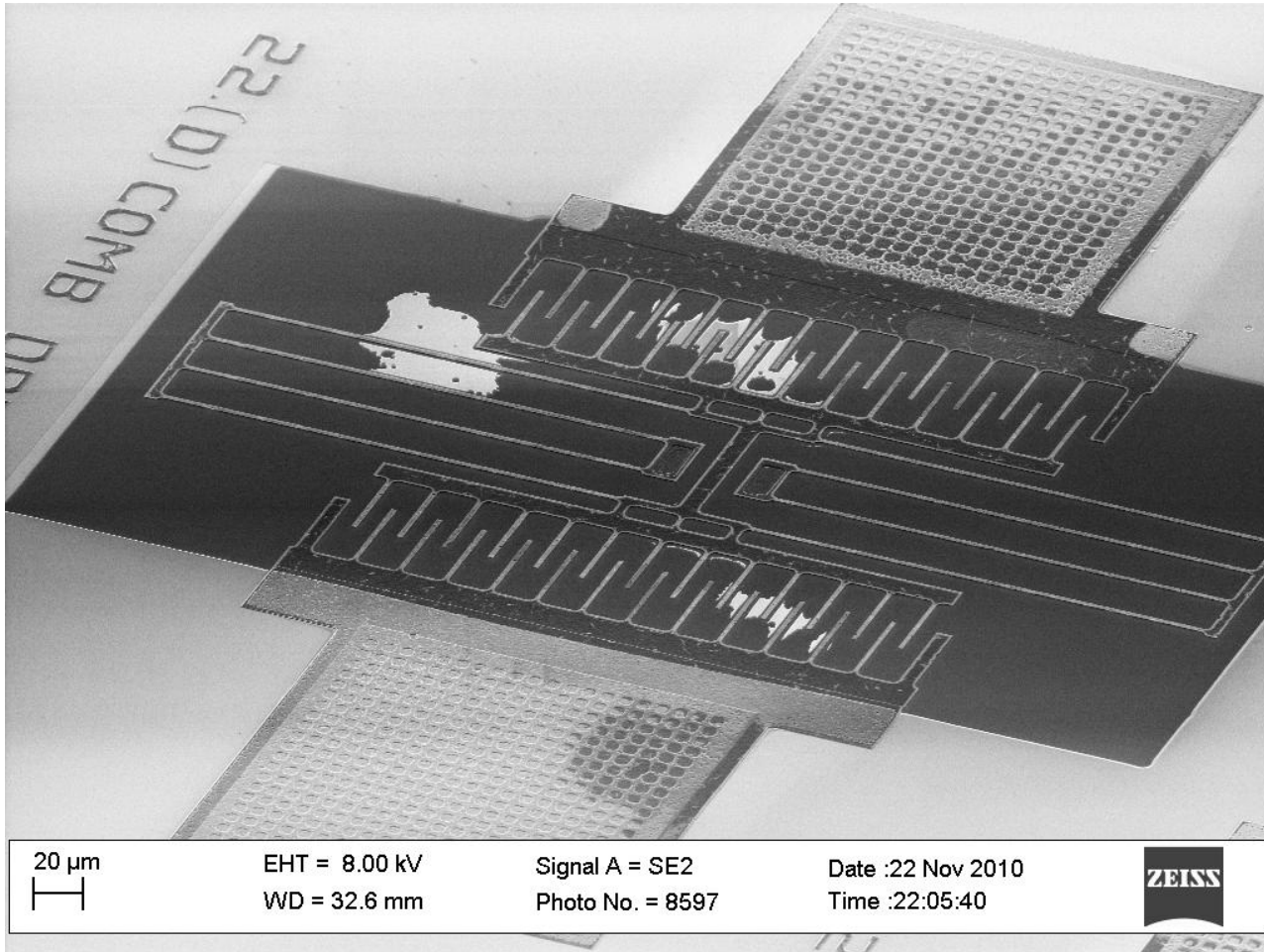
EE143 Comb Drive

- Comb width and spacing = $5\ \mu\text{m}$
- Shuttle width = $13\ \mu\text{m}$, folded truss = $12\ \mu\text{m}$, anchor size = $8 \times 20\ \mu\text{m}^2$
- Beam length = (A) $50\ \mu\text{m}$, (B) $100\ \mu\text{m}$, (C) $150\ \mu\text{m}$ and (D) $200\ \mu\text{m}$

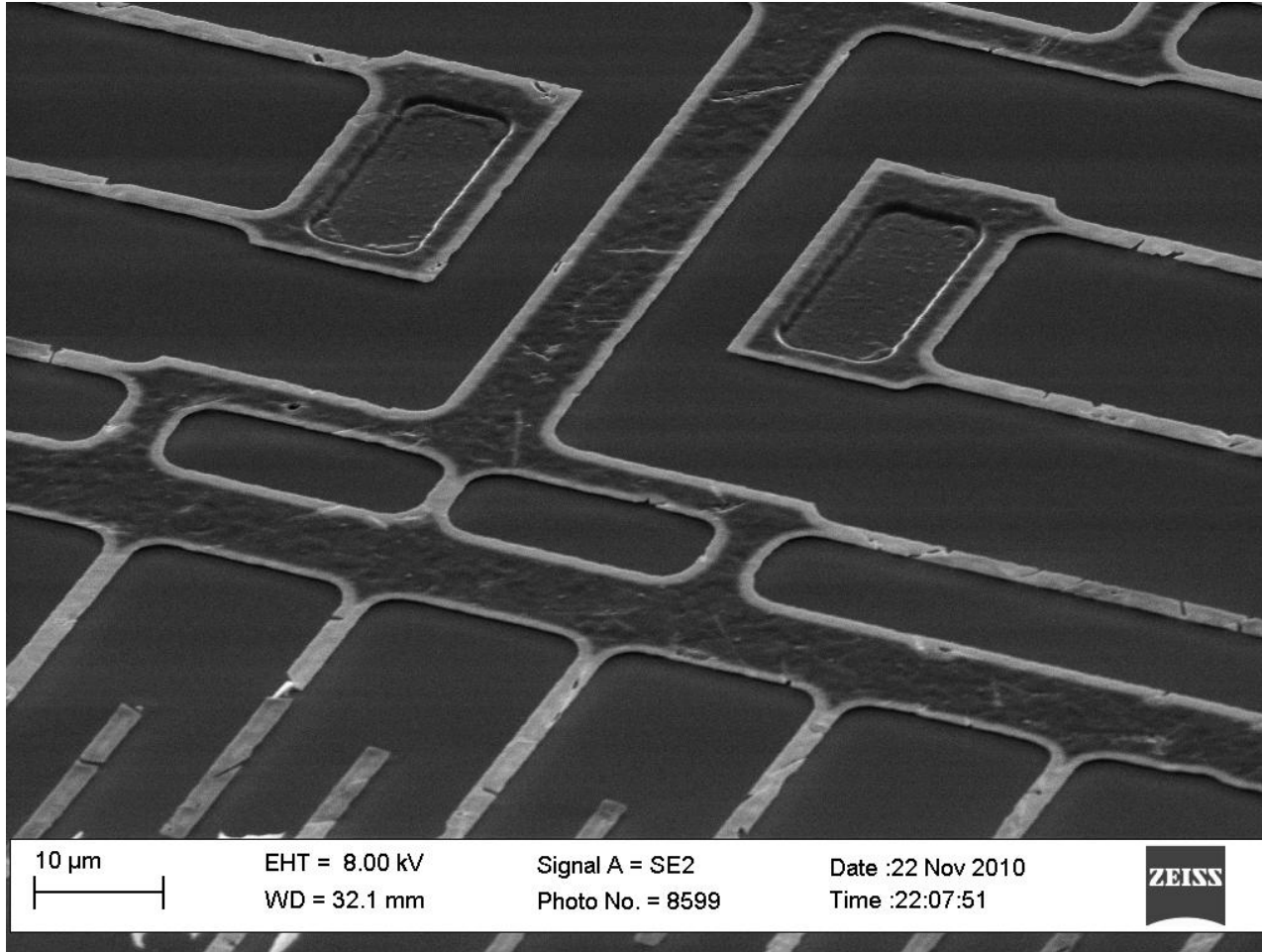


22.(A) COMB DRIVE 50UM

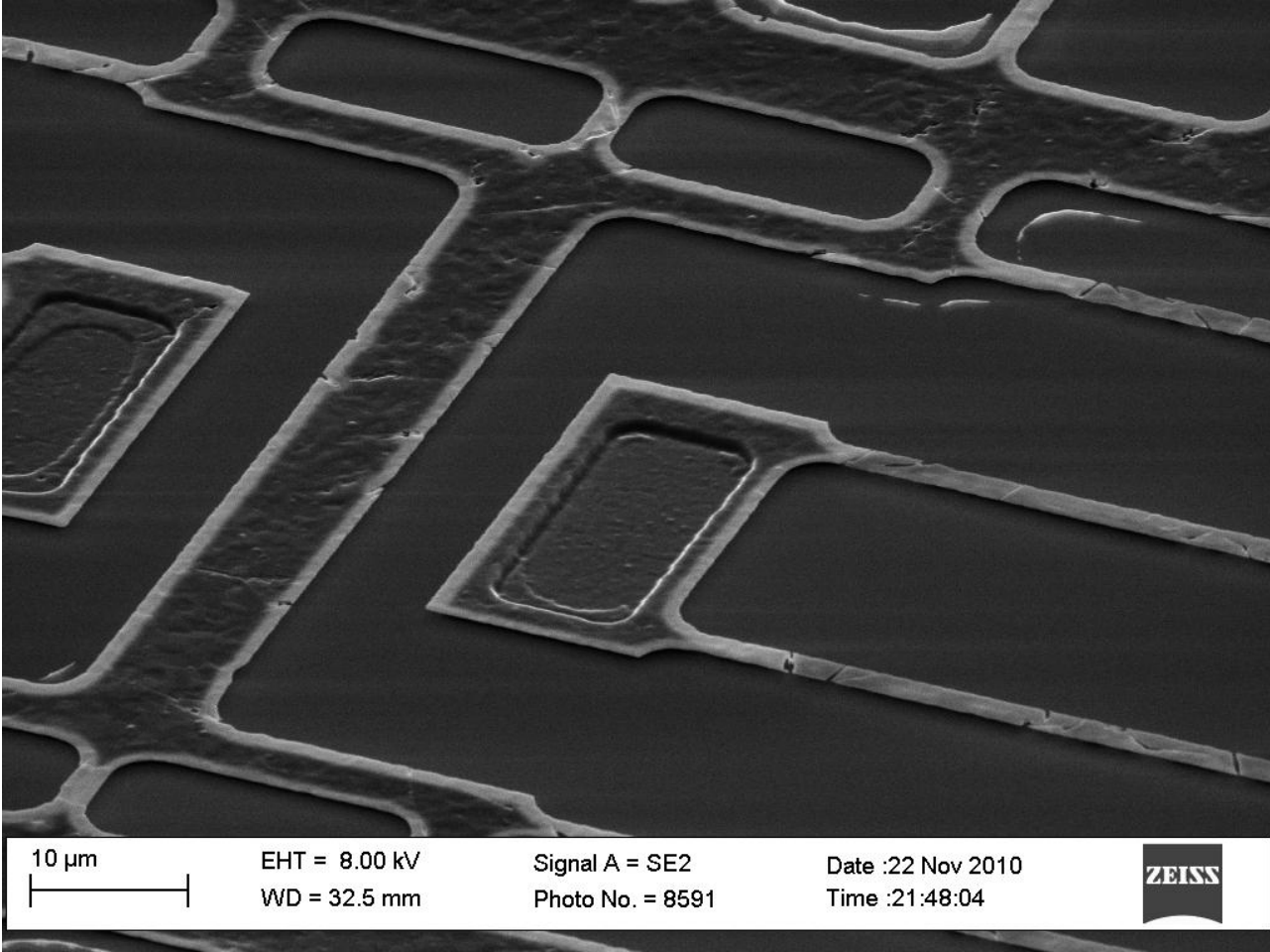
SEM Images (Partial Release, No ILD left)



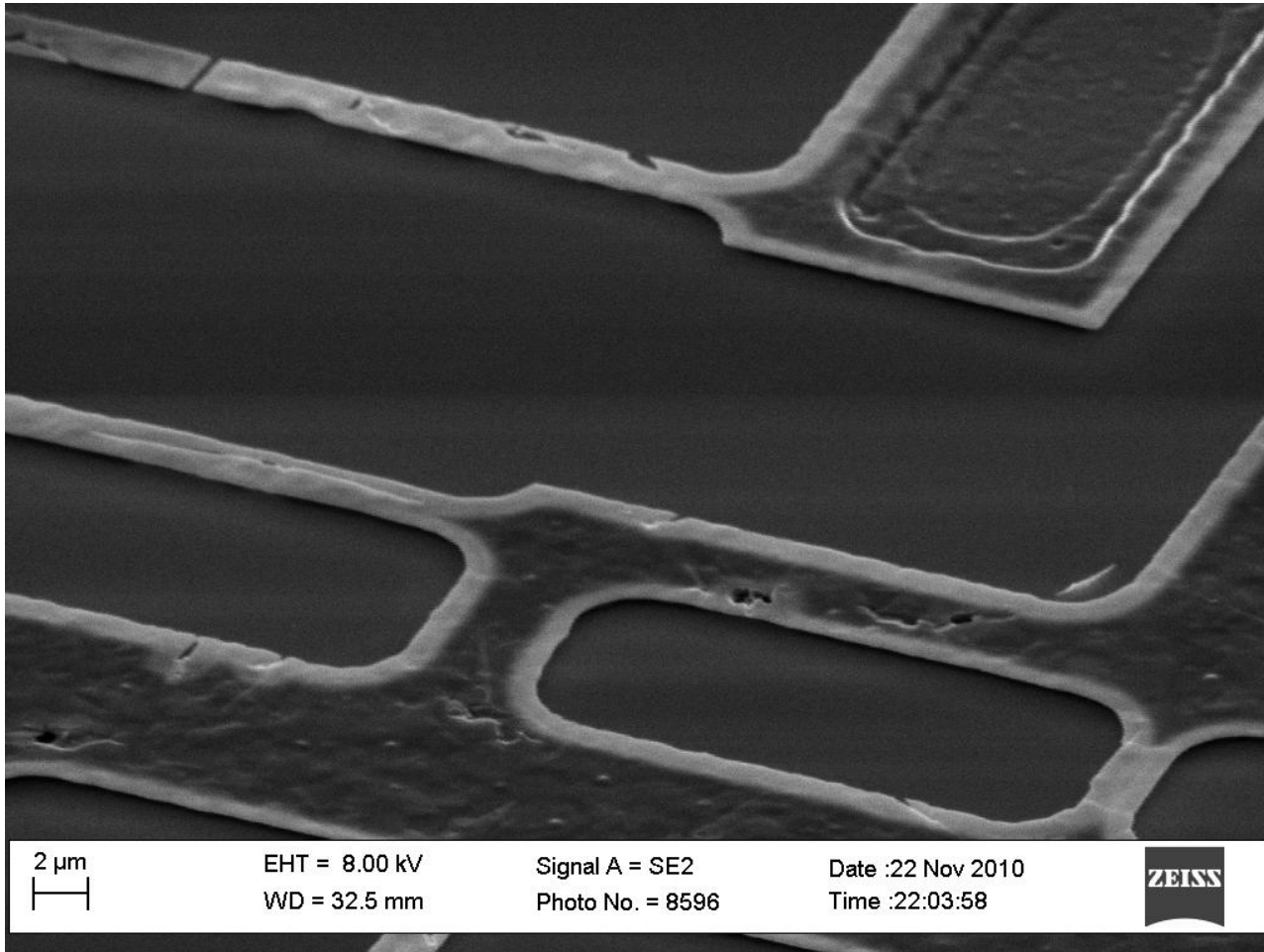
SEM Images (Partial Release, No ILD left)



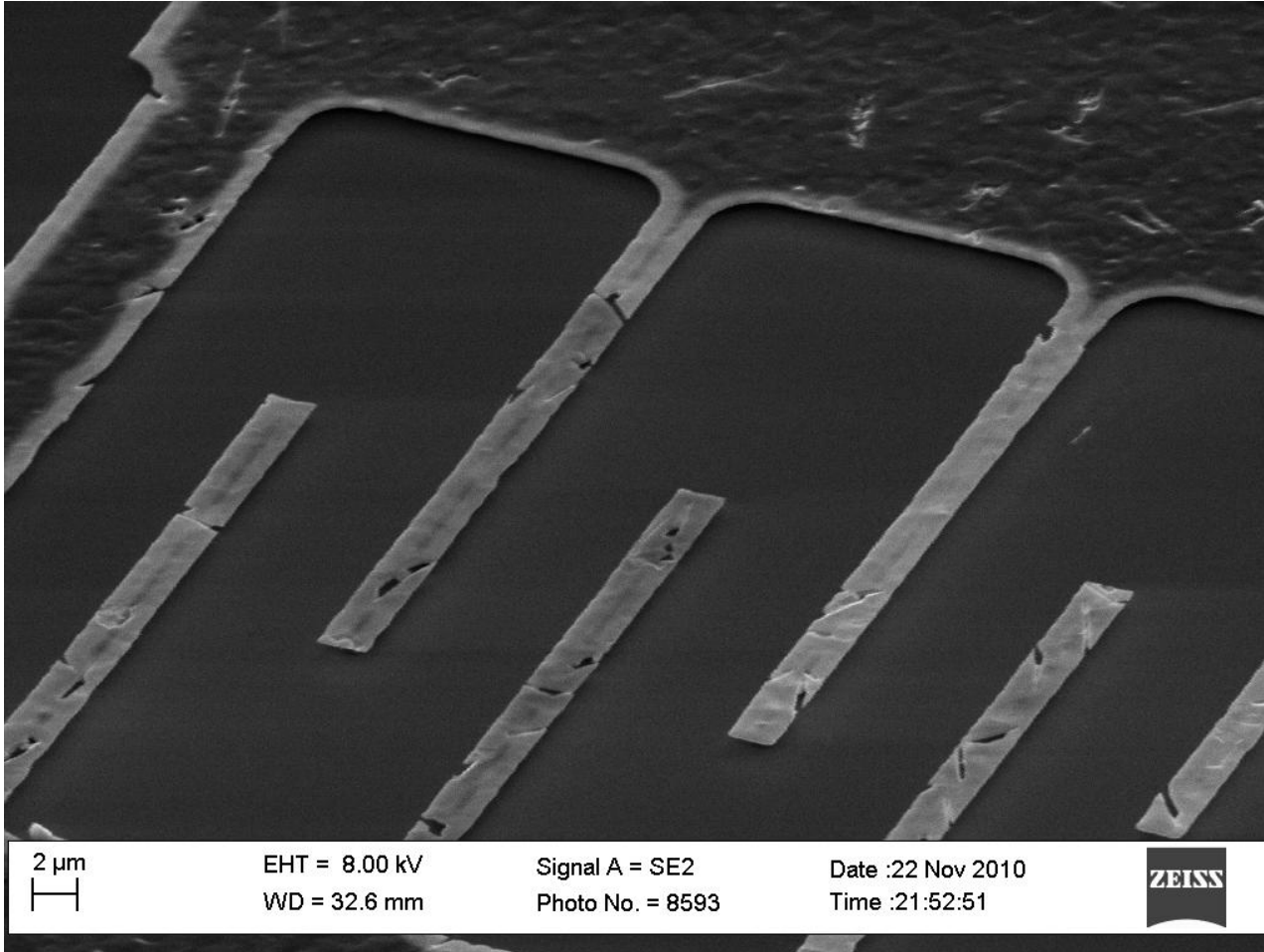
SEM Images (Partial Release, No ILD left)



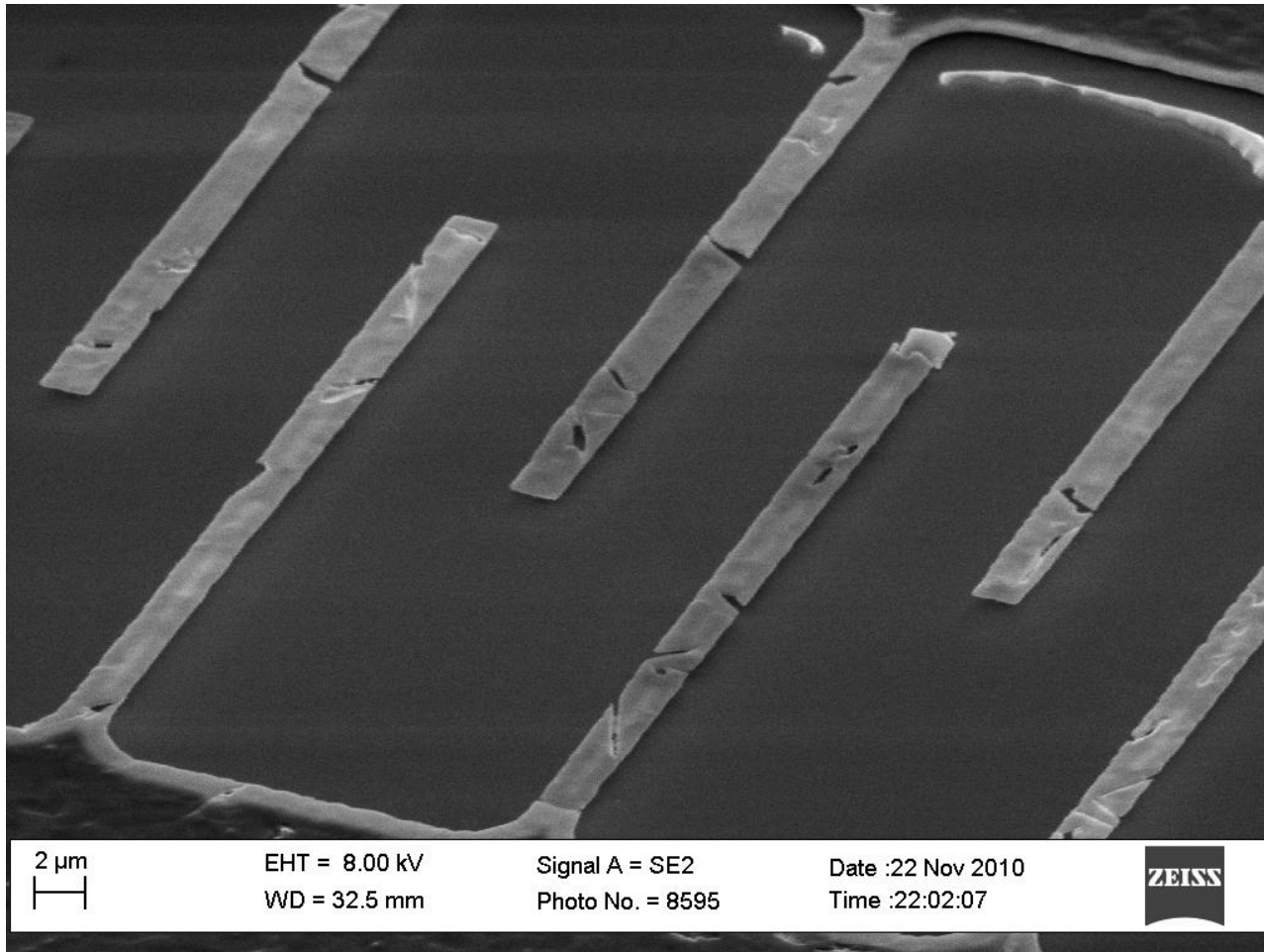
SEM Images (Partial Release, No ILD left)



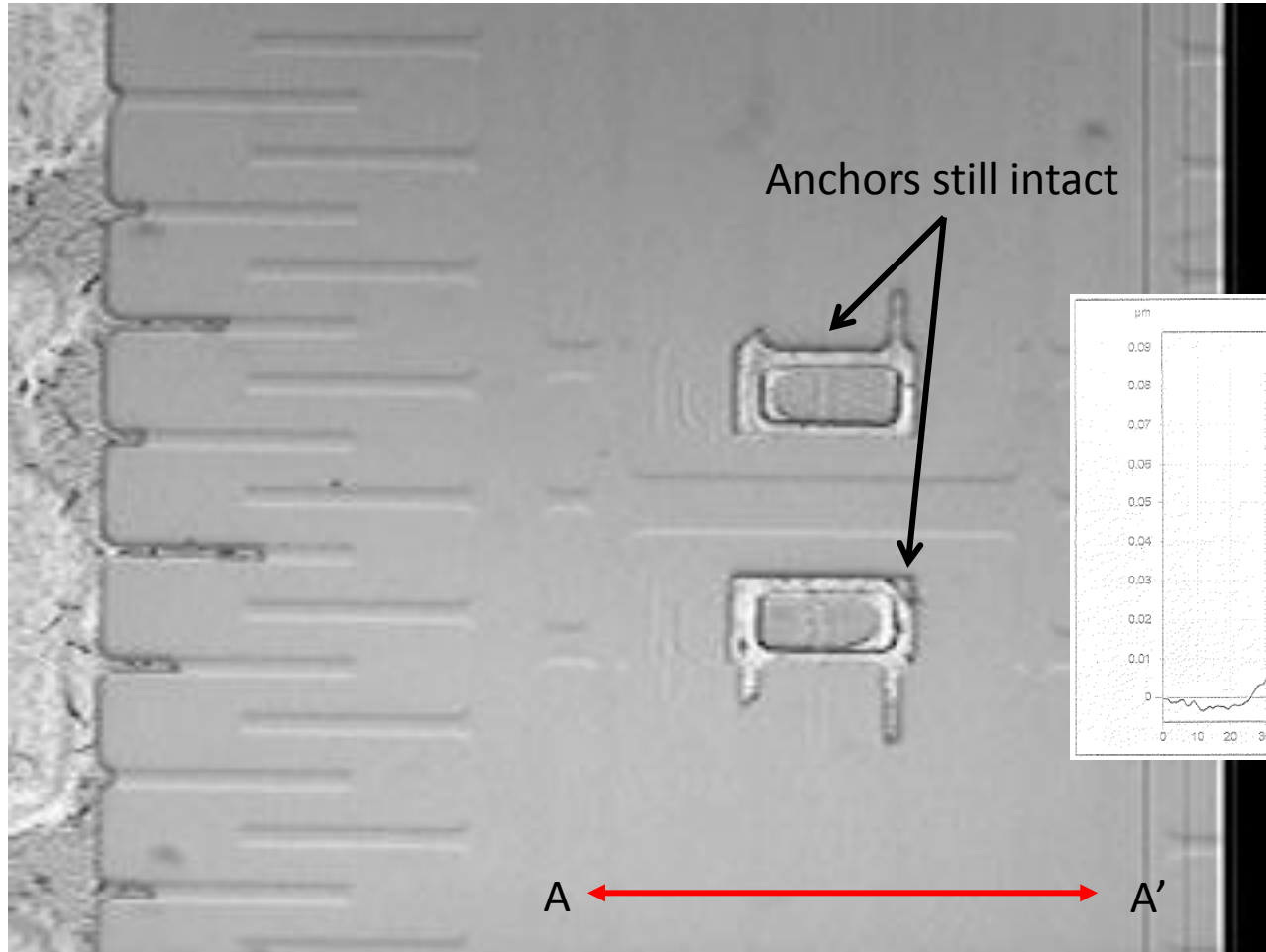
SEM Images (Partial Release, No ILD left)



SEM Images (Partial Release, No ILD left)



Full Release, Comb Drive Gone



Anchors still intact

Profilometry data across line AA'

