



Renovation of Soda Hall CS Upper Division labs  
Fall 2014

**DRAFT**  
Oct 9, 2014

Renovation of Soda Hall CS Upper Division labs  
Fall 2014

CONTENTS:

[Summary](#)  
[Implementation - Upper Division labs](#)

**Summary**

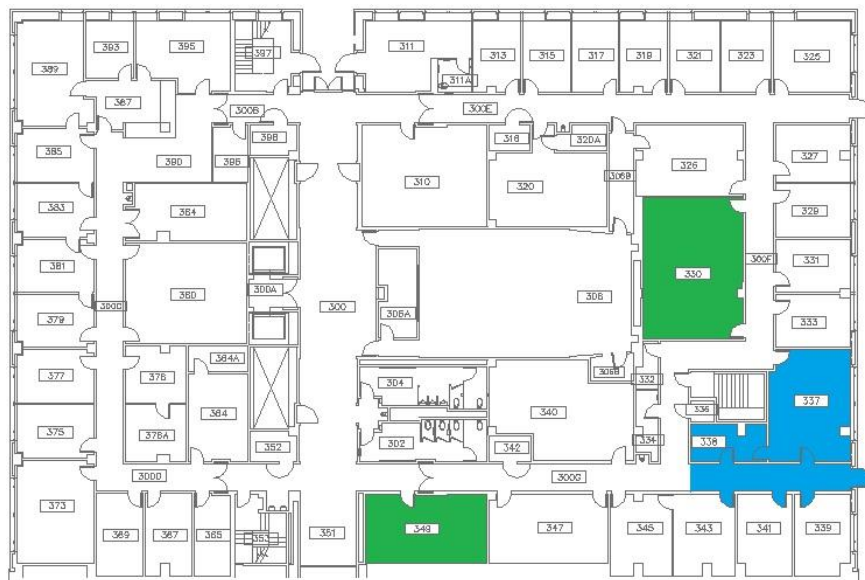
Following the renovation of 271, 273, 275, 277 Soda for the **CS Lower Division** courses in 2013, the EECS department, led by Chairman David Culler, began renovating 3 rooms on the third floor of Soda for **CS Upper Division** classes in 2014:

337 Soda has been repainted, expanded and converted to lounge space that is suitable for group collaboration and laptop use.

349 Soda has been repainted and new white boards are being installed. It will have 14 new PCs with VTx capability and GPUs, suitable for running virtual machines as well as CUDA and parallel programming.

330 Soda will be repainted, get new network boxes, carpet, tables, whiteboards, a projector and 32 new computers like the new ones in 349 Soda. This will increase the seating capacity from 28 to 32 (plus 2 spaces for laptop users), to accommodate classes with increasing enrollments.

The 3 rooms combined will have 46 workstations and seating for several laptop users. The EECS department has provided funding for the new computers and renovations.



Soda Hall - third floor  
CS Upper Division labs (330 & 349) and collaboration space (337)  
Fall 2014



Renovation of Soda Hall CS Upper Division labs  
Fall 2014

**DRAFT**  
Oct 9, 2014

**Implementation - Upper Division Labs**

330 Soda: 668 SF space, 32 workstations  
349 Soda: 300 SF space, 14 workstations

Alteration	Comments	330 Soda Est Cost	349 Soda Est Cost
46 new workstations	(Dell OptiPlex 9020, 32GM RAM, 500GB SATA drive, CUDA gpu, ASUS displays w/ integrated speakers)	50000	22000
floor boxes	floorbox w/ installation: \$3000 network & electrical	15000	0
projector, speakers, screen	330 Soda: includes installation	8000	0
tables (24"x60")	330 Soda: 16 tables \$650 each	10400	0
Power outlets on tables	330 Soda: 16 outlets \$150 each	2400	0
paint walls	330 Soda: 936 sq ft walls 349 Soda: 500 sq ft walls \$3/sq ft	3000	1500
new carpet	330 Soda: \$12/sq ft	8000	0
white boards	4 for 330 Soda 1 for 349 Soda \$800 each	3200	800
Labor	estimated	1500	750
contingency	estimated	5000	2500
Capital Projects fee	estimated	3400	1700
carpet cleaning - 1 year	\$.40/sq ft 2x a year; annual cost	500	250

\$110,400.00 \$29,500.00

Kevin Mullally  
EECS Instructional Support Group  
378 Cory Hall, (510) 643-6141  
[kevinm@eecs.berkeley.edu](mailto:kevinm@eecs.berkeley.edu)  
<http://inst.eecs.berkeley.edu/~kevinm>

Marcelino Enriquez  
EECS Instructional Support Group  
333 Soda Hall, (510) 642-9543  
[mars@eecs.berkeley.edu](mailto:mars@eecs.berkeley.edu)  
<http://inst.eecs.berkeley.edu/~mars>