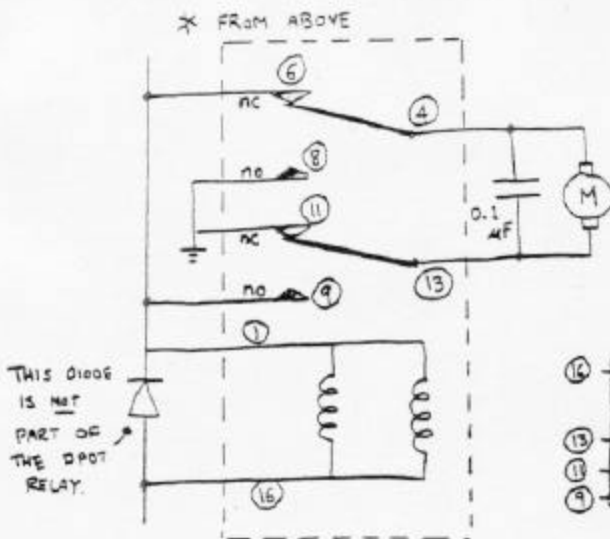
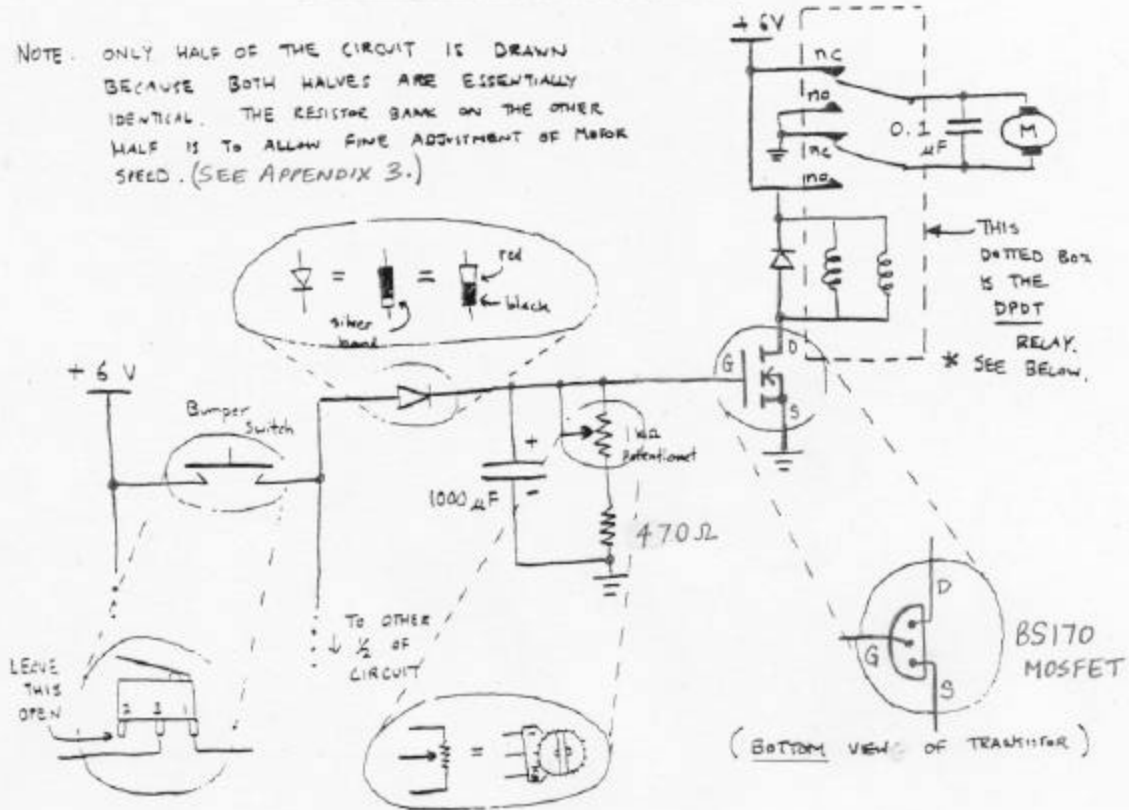


TUTEBOT CIRCUIT TIPS

NOTE: ONLY HALF OF THE CIRCUIT IS DRAWN BECAUSE BOTH HALVES ARE ESSENTIALLY IDENTICAL. THE RESISTOR BANK ON THE OTHER HALF IS TO ALLOW FINE ADJUSTMENT OF MOTOR SPEED. (SEE APPENDIX 3.)



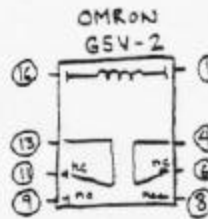
THIS DIODE IS NOT PART OF THE DPDT RELAY.

TIPS

- THE COILS ARE IN THE RELAYS. YOU DON'T NEED "INDUCTORS"
- YOUR 1000µF CAPACITOR MIGHT BE AN ELECTROLYTIC CAPACITOR, WHICH HAS POLARITY. TAKE NOTE!
- THE NUMBERS TO THE LEFT CORRESPOND TO THE NUMBERS ON THE RELAY.

• NC = "NORMALLY CLOSED"

• NO = "NORMALLY OPEN"



-YST
(1/8/97)