

Analytical Modeling of Vanishing Points and Curves in Catadioptric Cameras

Pedro Miraldo

Instituto Superior Técnico, Lisboa

pedro.miraldo@tecnico.ulisboa.pt

Francisco Eiras

University of Oxford

francisco.eiras@cs.ox.ac.uk

Srikumar Ramalingam

University of Utah

srikumar@cs.utah.edu

Abstract

Vanishing points and vanishing lines are classical geometrical concepts in perspective cameras that have a lineage dating back to 3 centuries. A vanishing point is a point on the image plane where parallel lines in 3D space appear to converge, whereas a vanishing line passes through 2 or more vanishing points. While such concepts are simple and intuitive in perspective cameras, their counterparts in catadioptric cameras (obtained using mirrors and lenses) are more involved. For example, lines in the 3D space map to higher degree curves in catadioptric cameras. The projection of a set of 3D parallel lines converges on a single point in perspective images, whereas they converge to more than one point in catadioptric cameras. To the best of our knowledge, we are not aware of any systematic development of analytical models for vanishing points and vanishing curves in different types of catadioptric cameras. In this paper, we derive parametric equations for vanishing points and vanishing curves using the calibration parameters, mirror shape coefficients, and direction vectors of parallel lines in 3D space. We show compelling experimental results on vanishing point estimation and absolute pose estimation for a wide range of catadioptric cameras in both simulations and real experiments.

1. Introduction

The idea of vanishing points in catadioptric images is definitely more involved than the classical and well-known image of the point of convergence from parallel railroad tracks. In Fig 1, we show two images of an urban scene captured using a spherical catadioptric camera (a pinhole camera looking at a spherical mirror). We consider two sets of parallel lines and their associated curves in the image space. First, we do not think in terms of straight lines in catadioptric images. Lines in the 3D space are projected to curves in catadioptric images. Furthermore, unlike perspective images, each set of parallel lines converges at more than one vanishing point. For example, in Fig. 1(a), the set of parallel lines projects as curves that intersect at two vanishing

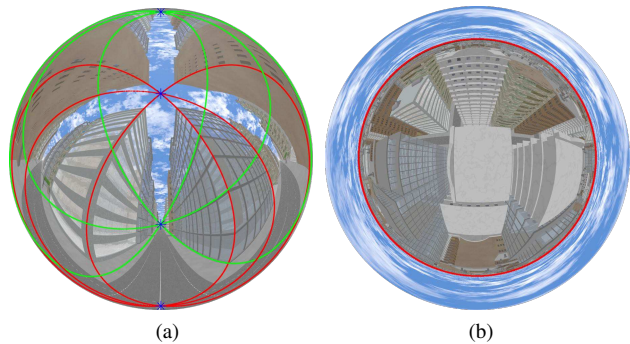


Figure 1: We illustrate vanishing points and vanishing curves in a catadioptric camera. (a) and (b) show two images from a spherical catadioptric camera. In (a), the red curves denote a set of parallel lines in 3D space, and the two blue points where the red curves converge are the two vanishing points. Similarly we show two other vanishing points associated with a different set of parallel lines that are denoted by green lines. In (b), we show a red vanishing curve passing through two or more vanishing points.

points. In Fig. 1(b), we show a vanishing curve that passes through more than one vanishing point. In other words, we can think of vanishing curves as some sort of horizon curves. These illustrated vanishing points and vanishing curves can also be expressed in polynomial equations, i.e., expressed in parametric equations. The main contribution of this paper is the analytical modeling of vanishing points and vanishing curves for different classes of catadioptric cameras (e.g., spherical, ellipsoidal, or hyperbolic mirrors).

In perspective cameras, vanishing points and vanishing lines are classical concepts that were primarily used by artists for drawings. However, these concepts are not just artistic fascinations, and they have been used by many vision researchers for a wide variety of applications: camera calibration [22, 23, 54, 57, 28], robot control [51, 49, 14], 3D reconstruction [44, 33, 24, 17, 48] and rotation estimation [4, 35, 39, 25, 11, 21]. This paper focuses on catadioptric cameras [42], which refers to a camera system where a pinhole camera observes the world from the reflection

on a mirror. While the theory we develop applies to different types of catadioptric cameras, fisheye cameras [18] can also be parameterized by catadioptric camera models [60, 40, 41]. In particular, our analysis applies to different classes of omnidirectional cameras: central [8, 7, 30, 9], axial, and non-central [53]. If the cameras satisfy certain conditions and the mirrors belong to specific types (hyperbolic, ellipsoidal, and parabolic), we can achieve a central model. In the case of a spherical mirror, one achieves an axial camera model where all the projection rays pass through a single line in space.

Several methods exist for the extraction of vanishing points without analytical modeling [54, 11, 38, 13, 12, 58, 5, 6, 34]. Vanishing curves are curves in the image that contain a space of solutions for vanishing points, sharing some properties. Similar to vanishing points, these curves have several different applications in computer vision, such as: camera calibration, motion control, geometric reasoning & image segmentation, and attitude estimation (see for example [56, 55, 43, 37, 52]). In this paper we derive parametric equations for modeling vanishing points and vanishing curves in the case of general catadioptric cameras that can be central, axial, or non-central. To the best of our knowledge, we are not aware of any other work that achieves this.

When considering the estimation of vanishing points, one needs to take into account the projection and fitting of 3D lines into their images. Several authors studied this problem in central perspective cameras. For central catadioptric cameras, this was studied by [31, 10], in which they parametrize the respective projection curve by a 2nd degree curve. There have been a few results on the projection of lines for non-central catadioptric cameras: 1) in [2], Agrawal et al. defined an analytical solution for the projection curve when considering spherical catadioptric cameras (a 4th degree curve); and 2) in [15], Cameo et al. addressed the projection and fitting of lines for cone catadioptric cameras and the camera aligned with the camera's axis of symmetry, in which they also achieved a 4th degree curve. There are alternative solutions to the fitting without implicitly considering the projection of 3D lines, for example: local approximations in small windows by considering the general linear camera approximations [27]; or by considering basis functions and look-up tables [59].

While this paper studies the analytical models for vanishing points and vanishing curves, we can think of simpler alternative solutions. For example, the easiest approach would be to approximate the underlying catadioptric model with a central one, correct the distortion, and treat the image as a perspective one, on which one can use classical methods for vanishing point estimation. While this method may work in practice, this approach is not theoretically correct for most catadioptric cameras. A slightly different approach is to reconstruct the 3D lines from 4 or more points on the

projected curves [19, 36, 20, 29, 16] in the non-central camera. It is important to note that one can obtain the 3D reconstruction of a line from a single image in a non-central camera. Once we reconstruct the parallel 3D lines in space, we can compute the vanishing point from their intersection. While this method is theoretically elegant, the approach is too brittle in practice, as noticed in [32, 2, 3].

1.1. Problem Definition and Contributions

This paper addresses the parameterization of both vanishing points and vanishing curves, for general (central or non-central) omnidirectional cameras. Our goal is to find parameterization for both, using the following definitions:

Vanishing Points (Sec. 2): A common image point that is the intersection of the projection of all parallel 3D straight lines (i.e. point at the infinity) onto a camera's image, as shown in Fig. 1(a). It should, then, only depend on the direction parameters of a 3D straight line.

Vanishing Curves (Sec. 3): The curve that includes vanishing points from straight lines perpendicular to some 3D plane in the world, as shown in Fig. 1(b).

We start by considering the projection of points on a 3D straight line, and the case where this point is in the infinity. With this approach, we are able to extract a polynomial equation that represents vanishing points as a function of the line's direction. Then, we address the inverse problem, i.e. computing lines' direction for a given vanishing point. After defining the vanishing points, we use that parameterization to define the vanishing curve.

In addition, to motivate the use of the proposed formulations, we apply the proposed methods in the relative and the absolute pose problems. The methods are evaluated and validated using synthetic and real images.

1.2. Notations

In our derivation, we will introduce many intermediate polynomial equations. Let $\kappa_i^j[\cdot]$ denote the i^{th} polynomial equation with degree j . We will consider a parametric point on the surface of an axially symmetric quadric mirror ($\mathbf{r} \in \mathbb{R}^3$), which satisfies the following constraint:

$$\Omega(\mathbf{r}) := r_1^2 + r_2^2 + Ar_3^2 + Br_3 - C = 0, \quad (1)$$

where A , B , and C are the mirror's parameters. The normal to the mirror at the point \mathbf{r} is given by:

$$\mathbf{n} = \nabla\Omega(\mathbf{r}) := [r_1 \quad r_2 \quad Ar_3 + B/2]^T. \quad (2)$$

To represent 3D lines, by default, we use the notation that represent all points that belong to that line:

$$\mathbf{p}(\lambda) := \lambda\mathbf{s} + \mathbf{q}, \text{ where } \lambda \in \mathbb{R}^+. \quad (3)$$

Here \mathbf{q} is a 3D point on the line and \mathbf{s} is the direction vector.

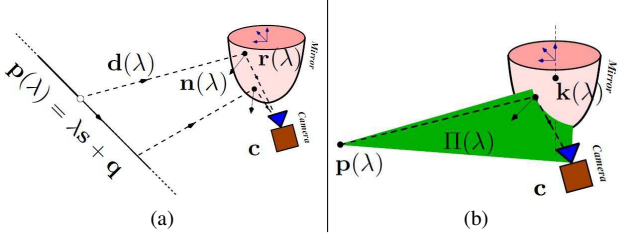


Figure 2: We show the projection of a line in a catadioptric image. The camera does not see the world directly, but observe it through the reflection using the mirror. (a) We show the projection of a parameterized point on a line given by $\mathbf{p}(\lambda) := \lambda \mathbf{s} + \mathbf{q}$. The point \mathbf{c} and $\mathbf{r}(\lambda)$ are the center of the camera and the reflection point on the mirror, respectively. The normal vector at the reflection point $\mathbf{r}(\lambda)$ is given by $\mathbf{n}(\lambda)$. (b) We show the reflection plane that is defined by the camera center (\mathbf{c}), reflection point ($\mathbf{r}(\lambda)$) and the parameterized 3D point ($\mathbf{p}(\lambda)$).

2. Vanishing Points

This section addresses the parameterization of vanishing points for general catadioptric camera systems (see Fig. 1(a)). We observe the projection of a 3D line in space on an image obtained through the reflection on a mirror. Considering a calibrated camera, there is a unique correspondence between a vanishing point on the image and its associated reflection point on the mirror. We will derive a parametric equation that relates reflection points on the mirror, line direction vector, and camera parameters. The parametric equation is beneficial for at least 2 reasons. First, the vanishing points can be estimated from the parametric equation by looking for the projection of points at the infinity on the 3D lines. Additionally, we can also use the parametric equation to extract the direction vector of the parallel lines associated with given vanishing points.

2.1. Parameterization of Vanishing Points

We briefly provide the general approach and the constraints involved in the parameterization of vanishing points, while the intermediate equations and coefficients are only shown in the supplementary materials. Consider Fig 2(a), a point on the line $\mathbf{p}(\lambda)$, its reflection point on the mirror $\mathbf{r}(\lambda)$, and the perspective camera center $\mathbf{c} = [0 \ c_2 \ c_3]^T$ define a plane $\Pi(\lambda)$ (denoted as reflection plane), as shown in Fig. 2(b). Notice that \mathbf{p} and \mathbf{r} depend on the depth λ of the point on the line, while \mathbf{c} is fixed.

Another property of the reflection plane is that it must be parallel to the normal vector, at the respective reflection point. As a result, any point $\mathbf{k}(\lambda) = \mathbf{r}(\lambda) + \nu \mathbf{n}(\lambda)$, for any

ν , belongs to the reflection plane. Let us consider $\mathbf{r}(\lambda) = [x \ y \ z]^T$. Setting $\nu = -1$, we write:

$$\mathbf{k}(\lambda) \in \Pi(\lambda) = [0 \ 0 \ z - Az - B/2]^T, \quad (4)$$

which corresponds to the intersection of the reflection plane $\Pi(\lambda)$ with the z -axis of the mirror (mirror's axis of symmetry), as shown in Fig. 2(b). As a result and since $\mathbf{k}, \mathbf{p}(\lambda), \mathbf{r}(\lambda), \mathbf{c} \in \Pi(\lambda)$, one can write:

$$\det \begin{pmatrix} \mathbf{r}(\lambda) & \mathbf{k}(\lambda) & \mathbf{c} & \mathbf{p}(\lambda) \\ 1 & 1 & 1 & 1 \end{pmatrix} = 0, \quad (5)$$

which can be expanded to:

$$(\kappa_1^1[z] \lambda + \kappa_2^1[z]) x + \kappa_3^2[y, z] \lambda + \kappa_4^2[y, z] = 0. \quad (6)$$

Solving this equation as a function of x , we write:

$$x = -\frac{\kappa_3^2[y, z] \lambda + \kappa_4^2[y, z]}{\kappa_1^1[z] \lambda + \kappa_2^1[z]}. \quad (7)$$

From its definition, vanishing points imply $\lambda = \infty$, in (3). Then, using (7), we can derive a constraint:

$$x = -\lim_{\lambda \rightarrow \infty} \frac{\kappa_3^2[y, z] \lambda + \kappa_4^2[y, z]}{\kappa_1^1[z] \lambda + \kappa_2^1[z]} = -\frac{\kappa_3^2[y, z]}{\kappa_1^1[z]}, \quad (8)$$

where

$$\kappa_1^1[z] = 2s_3c_2 - 2s_2c_3 - Bs_2 + 2s_2(1 - A)z \quad (9)$$

$$\begin{aligned} \kappa_3^2[y, z] = & s_1(2A - 2)yz + s_1(B + 2c_3)y - 2As_1c_2z \\ & - Bs_1c_2. \end{aligned} \quad (10)$$

From the previous equation, one can see that this constraint only depends on the direction of the line (i.e. parameter \mathbf{s}) and the camera parameters.

Using Snell's law of reflection, we have:

$$\mathbf{d}(\lambda) \times (\mathbf{p}(\lambda) - \mathbf{r}(\lambda)) = \mathbf{0}. \quad (11)$$

We rewrite it as follows:

$$\mathbf{d}(\lambda) \sim 4 \|\mathbf{n}(\lambda)\| \tilde{\mathbf{d}}(\lambda) - 8 \mathbf{n}(\lambda) \langle \tilde{\mathbf{d}}(\lambda), \mathbf{n}(\lambda) \rangle, \quad (12)$$

where $\tilde{\mathbf{d}}$ is the reflected ray at the point \mathbf{r} . To conclude, still from Fig. 2(a), we define $\tilde{\mathbf{d}}$ as:

$$\tilde{\mathbf{d}}(\lambda) \sim \mathbf{r}(\lambda) - \mathbf{c}. \quad (13)$$

Replacing (13) and (2) in (12), and this last one in (11), we get three equations:

$$\kappa_5^3[x, y, z, \lambda] = 0, \kappa_6^3[x, y, z, \lambda] = 0, \kappa_7^3[y, z, \lambda] = 0. \quad (14)$$

¹Notice that, since we are using an axially symmetric quadric mirror, one can rotate the world coordinate system ensuring that $c_1 = 0$.

To ease the calculation and since they are linearly dependent, we choose $\kappa_7^3[y, z, \lambda]$. This one does not depend on the x variable and is linear in λ . Then, one can extract λ as:

$$\lambda = -\frac{\kappa_8^3[y, z]}{\kappa_9^3[y, z]}. \quad (15)$$

Again, from its definition, vanishing points imply $\lambda = \infty$. This means that $\kappa_9^3[y, z]$ in (15) must be equal to zero. This equation only depends on the lines direction (i.e. parameters \mathbf{s}). Then, using (8), (15), and the mirrors equation (1), one can compute vanishing points on the mirror for a given direction $\mathbf{s} \in \mathbb{R}^3$, by solving the system:

$$\begin{cases} x\kappa_1^1[z] = -\kappa_3^2[y, z] \\ \kappa_9^3[y, z] = 0 \\ x^2 + y^2 + Az^2 + Bz - C = 0, \end{cases} \quad (16)$$

where:

$$\begin{aligned} \kappa_9^3[y, z] = & a_1y^2 + a_2yz^2 + a_3yz + \\ & + a_4y + a_5z^3 + a_6z^2 + a_7z + a_8. \end{aligned} \quad (17)$$

In the next subsection we present a method to solve this system of equations.

2.2. Computing Vanishing Points from a Given Direction

To compute the coordinates of a vanishing point on the mirror $\mathbf{r} = [x \ y \ z]$, for a given direction, in this subsection we present a method to solve (16). We start by replacing x in the first equation, using the mirror's equation, and squaring both sides of the equation:

$$\begin{cases} \kappa_{10}^4[y, z] = \kappa_3^2[y, z]^2 + (y^2 + Az^2 + Bz - C)\kappa_1^1[z]^2 = 0, \\ \kappa_9^3[y, z] = 0 \end{cases} \quad (18)$$

where:

$$\begin{aligned} \kappa_{10}^4[y, z] = & b_1y^2z^2 + b_2y^2z + b_3y^2 + b_4yz^2 + b_5yz + \\ & + b_6y + b_7z^4 + b_8z^3 + b_9z^2 + b_{10}z + b_{11}. \end{aligned} \quad (19)$$

Now, to solve this problem, since $\kappa_9^3[y, z]$ has degree two in y (see (17)), we solve this polynomial equation as a function of y , which gives:

$$y = \frac{\kappa_{11}^2[z] \pm \sqrt{\kappa_{12}^4[z]}}{2a_1}, \quad (20)$$

By replacing it in (19), we obtain:

$$\kappa_{13}^2[z]\kappa_{12}^4[z] + \kappa_{14}^4[z] \pm \kappa_{15}^2[z]\sqrt{\kappa_{12}^4[z]} = 0. \quad (21)$$

After some simplifications, we write a 10th degree polynomial equation as:

$$(\kappa_{13}^2[z]\kappa_{12}^4[z] + \kappa_{14}^4[z])^2 - \kappa_{15}^2[z]^2\kappa_{12}^4[z] = 0 \Rightarrow \kappa_{16}^{10}[z] = 0. \quad (22)$$

Table 1: Degrees of the polynomial equation that can be used to compute vanishing points, for specific catadioptric camera systems. The * denotes the specific configurations with analytical solutions, which are shown in the supplementary material.

Mirror Type	Degree of $\kappa_{16}[z]$
General	10
General Axial ($c_2 = 0$)	8
Spherical Axial ($A = 1, B = 0, c_2 = 0$)	4
Ellipsoid Axial ($A = 0, C = 0, c_2 = 0$)	6
Conical Axial ($B = 0, C = 0, c_2 = 0$)	4 and $z = 0$
Cylindrical Axial ($A = 0, B = 0, c_2 = 0$)	4
Central with Ellipsoidal Mirror	4*
Central with Hyperboloidal Mirror	4*

To compute the coordinates of the reflection of the vanishing point, one has to compute the solution for z (the real roots of $\kappa_{16}^{10}[z]$). Then, for each solution of z , we get the respective y from (20), and x using the first equation of (16).

When considering specific types of camera positions (e.g. axial catadioptric systems) and the use of specific types of mirrors, the polynomial equation $\kappa_{16}^{10}[z]$ becomes simpler, in terms of its coefficients and its final polynomial degree. Results for several types of configurations are shown in Tab. 1. Furthermore, we observed that the use of unified central model [30, 9] simplified the theory for the central case. The projection of lines using the unified central model [30, 9] is given by a 2nd degree polynomial, which makes the relation between 3D lines and vanishing points simpler. For this case, we derive a 4th degree polynomial equation that relates a line's direction with vanishing points, which is shown in the supplementary material.

In the next subsection, we present an easy method to extract directions from vanishing points.

2.3. Getting Direction from Vanishing Points

Now, let us consider that we have a vanishing point given by $\mathbf{r} = [x, y, z]$. This subsection addresses the estimation the direction that yields the respective vanishing point. For this purpose, we rewrite the system of (16) as a function of \mathbf{s} , which gives:

$$\begin{cases} \kappa_{17}^1[s_2, s_3] = a_1s_2 + a_2s_3 = 0 \\ \kappa_{18}^2[s_1, s_2, s_3] = b_1s_1^2 + b_2s_2^2 + b_3s_2s_3 + b_4s_3^2 = 0 \\ \kappa_{19}^2[s_1, s_2, s_3] = s_1^2 + s_2^2 + s_3^2 - 1 = 0. \end{cases} \quad (23)$$

To get the direction from a given vanishing points, one needs to solve the system of (23). First, we compute s_3 from $\kappa_{17}^1[s_2, s_3]$, and replace it in the second and third equations of the system of (23), which gives:

$$\begin{cases} b_1s_1^2 + \left(b_2 - b_3\frac{a_1}{a_2} + b_4\frac{a_1^2}{a_2^2}\right)s_2^2 = 0 \\ s_1^2 + \left(1 + \frac{a_1^2}{a_2^2}\right)s_2^2 - 1 = 0. \end{cases} \quad (24)$$

Through elimination, we obtain the solution for s_2 , as:

$$s_2^2 = \frac{-b_1}{\left(b_2 - b_3 \frac{a_1}{a_2} + b_4 \frac{a_1^2}{a_2^2} - b_1 - b_1 \frac{a_1^2}{a_2^2}\right)} \quad (25)$$

To conclude, to obtain the coordinates of the direction from the vanishing point \mathbf{r} , one can compute s_2 from (25), obtain $s_3 = \frac{-a_1 s_2}{a_2}$, and s_1 from $s_1 = \pm \sqrt{1 - s_2^2 - s_3^2}$.

3. Curves at the Infinity

A vanishing curve can be seen as a curve that contains all possible vanishing points associated with a 3D ground plan (a plan of parallel lines). In this section, we will derive an equation to represent this curve in the mirror's surface, as a function of the vector that is normal to a 3D plane.

As presented in Sec. 1.1, vanishing curves are defined by the set of vanishing points that result from directions perpendicular to some normal vector \mathbf{n} . To start our derivations, we define \mathbf{s}_1 and \mathbf{s}_2 as the basis for the space of directions perpendicular to \mathbf{n} as:

$$\mathbf{s} = \alpha \mathbf{s}_1 + (1 - \alpha) \mathbf{s}_2, \quad (26)$$

such that $\mathbf{s}^T \mathbf{n} = 0$ for any $\alpha \in \mathbb{R}$. For that purpose, let us consider three possible solutions for \mathbf{s}_1 and \mathbf{s}_2 , as $\{\mathbf{s}^+, \mathbf{s}^-, \mathbf{s}^*\}$:

$$\mathbf{s}^+ = \mathbf{n} \times \begin{bmatrix} 1 & 0 & 0 \end{bmatrix} = \begin{bmatrix} 0 & n_3 & -n_2 \end{bmatrix} \quad (27)$$

$$\mathbf{s}^- = \mathbf{n} \times \begin{bmatrix} 0 & 1 & 0 \end{bmatrix} = \begin{bmatrix} -n_3 & 0 & n_1 \end{bmatrix} \quad (28)$$

$$\mathbf{s}^* = \mathbf{n} \times \begin{bmatrix} 0 & 0 & 1 \end{bmatrix} = \begin{bmatrix} n_2 & -n_1 & 0 \end{bmatrix}. \quad (29)$$

Each of the three vectors is either null or orthogonal to \mathbf{n} , with at least two nonzero ones. We associate to \mathbf{s}_1 and \mathbf{s}_2 the two vectors in the $\{\mathbf{s}^+, \mathbf{s}^-, \mathbf{s}^*\}$ with the highest norm.

Assuming that both \mathbf{s}_1 and \mathbf{s}_2 are defined as presented above, we use the parameterization of the direction (26) in the constraint (8). After some simplifications, one can define a 3D surface $\Gamma(\mathbf{r})$ as:

$$\Gamma(\mathbf{r}) := \kappa_{20}^2 [y, z] x + \kappa_{21}^3 [y, z] = 0, \quad (30)$$

The coefficients for this polynomial are defined in the supplementary material.

To conclude, one can define vanishing curves by the intersection of $\Gamma(\mathbf{r})$ with the quadric mirror, such that:

$$\gamma(\mathbf{r}) := \{\mathbf{r} = [x, y, z] \in \mathbb{R}^3 : \Gamma(\mathbf{r}) \wedge \Omega(\mathbf{r}) = 0\}. \quad (31)$$

Supplementary material provides a method to solve (31).

4. Applications and Experimental Results

We performed experiments using simulation and real data. We evaluate the proposed solutions: (1) the computation of vanishing points from a given direction; and (2)

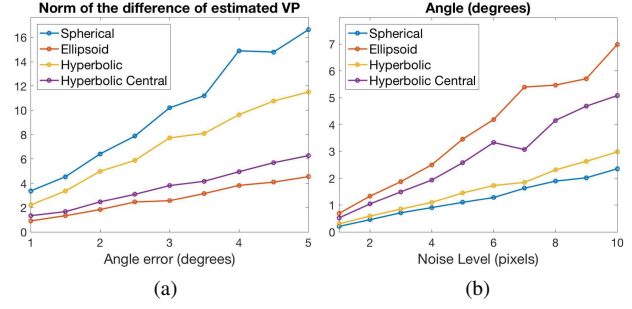


Figure 3: (a) Computation of vanishing points from line directions (a). (b) Estimation of the direction from vanishing points (b). We consider four different camera configurations under different noise settings.

to recover the directions from vanishing points (Sec. 4.1). We present a method to compute the camera's pose using vanishing points (Sec. 4.2) and present some information regarding the projection of 3D lines onto the image. To conclude, we exploit the relative pose problem (Sec. 4.3).

Real data was used to estimate both vanishing points and vanishing curves. We show some results for the estimation of the absolute camera pose (Sec. 4.4), modeling of central and non-central systems (Sec 4.5), and for the parameterization of the vanishing curve (Sec. 4.6).

4.1. Evaluation of the Vanishing Points and the Direction Estimation with Noise

In this subsection we evaluate the estimation of vanishing points in the presence of noise in simulation data. For a given direction \mathbf{s}_{GT} , we compute the ground truth vanishing point \mathbf{r}_{GT} as described in Sec. 2.2. The effect of noise in the data is simulated by changing the direction vector \mathbf{s} by a random angle. For that direction, we compute the vanishing point \mathbf{r} , and measure the distance error: $\delta_i = \|\mathbf{r}_{GT} - \mathbf{r}_i\|$. This procedure is repeated varying the noise level from 0 to 5 degrees, and for each level of noise we consider 10^2 randomly generated trials. Results for four different systems are shown in Fig. 3(a). Although they vary significantly for the considered configurations, the errors are (approximately) linearly with the noise for all of them. The configurations that use ellipsoid and central hyperbolic mirrors show better results than the spherical and hyperbolic ².

To evaluate the computation of a direction associated with a given vanishing point, we: 1) obtain the vanishing point for a given direction \mathbf{s}_{GT} , Sec. 2.1; 2) add noise to the coordinates of the computed vanishing points (a normal distribution with a variable standard deviation, denoted as `Noise_Level` and a mean of 0); 3) compute the direction

²Note that these results also depend on the camera position w.r.t. the mirror, which we keep constant for all the experiments with the exception of the hyperbolic central that requires a specific camera position.

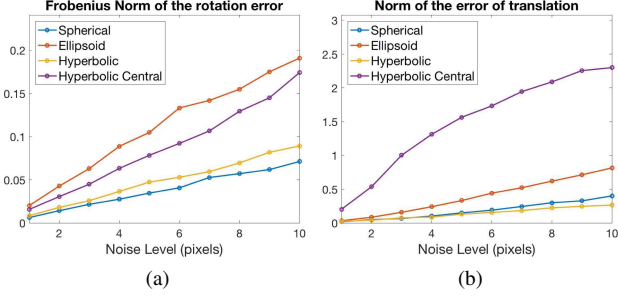


Figure 4: Evaluation of the camera pose using vanishing points, as a function of the noise level in the image. (a) shows the results for the estimation of the rotation while, (b) presents the results for the translation parameters. For that purpose, we consider four different camera configurations under different noise settings.

s, as shown in Sec. 2.3; and 4) measure the angle between the estimated direction and the ground truth. This procedure is repeated 10^2 times for each level of noise (from 0 to 10 pixels), and the results are shown in Fig. 3(b). Similar to what happens in the results presented in Fig. 3(a), in this case the errors also vary linearly with the noise for all of the configurations, with configurations with hyperbolic central and ellipsoidal mirrors performing worse than the rest.

4.2. Camera Pose

This subsection addresses the estimation of the absolute camera pose, from two or more vanishing points.

4.2.1 Estimation of the Rotation Parameters

From the results presented above, using $N \geq 2$ vanishing points, we can recover N different directions $\{\mathbf{s}_1, \dots, \mathbf{s}_N\}$. Knowing these directions in the world coordinate system (let us denote these as $\{\check{\mathbf{s}}_1, \dots, \check{\mathbf{s}}_N\}$), we use the orthogonal Procrustes' problem [50] to compute the rotation $\mathbf{R} \in SO(3)$ that aligns camera and world coordinate systems.

To evaluate the estimation of the rotation parameters in an absolute camera pose application, we consider the following procedure: 1) we selected three random directions in the world; 2) apply a *ground truth* rotation $\mathbf{R}_{GT} \in SO(3)$ to these directions; 3) compute the respective vanishing points; 4) add noise to the vanishing points using the variable `Noise_Level` (similar to what was done in Sec. 4.1); 5) compute the 3D direction from the noisy vanishing points; 6) compute the rotation \mathbf{R} using the Procrustes' problem; and 7) compute the error in the estimation of the rotation matrix by $\alpha_{Err} = \|\mathbf{R}_{GT} - \mathbf{R}\|_{Frob}$. We repeat this procedure 10^2 for each level of noise for four different configurations. Results for this evaluation are shown in Fig. 4(a). The errors in the estimation of the rotation

matrix vary linearly with the noise in the image, and the behaviour in terms of camera configuration is similar to the one in Fig. 3(b) (which makes sense because the rotation estimation depends on the method used to get directions from vanishing points).

We note that this method can be applied to $N = 2$, by considering $\check{\mathbf{s}}_3 = \check{\mathbf{s}}_1 \times \check{\mathbf{s}}_2$. An example of the rotation estimation using only two vanishing points is shown below.

4.2.2 Estimation of the Translation Parameters

For the estimation of the pose's translation parameters $\mathbf{t} \in \mathbb{R}^3$, one needs to use more information than vanishing points. In this subsection, we show a technique that, based on previously estimated rotation parameters (which was computed from Sec. 4.2.1) and with knowledge of the coordinates of (at least) three image points that are images of two 3D straight lines³, is able to compute the camera's translation parameters.

To simplify the notation, let us now represent the 3D lines using *Plücker* coordinates [47], by $\check{\mathbf{l}}_i \in \mathbb{R}^6 = (\check{\mathbf{s}}_i, \check{\mathbf{m}}_i)$, for $i = 1, \dots, N$, where $\check{\mathbf{m}}_i = \check{\mathbf{q}}_i \times \check{\mathbf{s}}_i$. Now, for a set of pixels that are images of these 3D straight lines, one can map them into 3D straight lines (inverse projection map) $\mathbf{l}_{i,j} \in \mathbb{R}^6 = (\mathbf{s}_{i,j}, \mathbf{m}_{i,j})$, where $j = 1, \dots, M_i$ and M_i represents the number of points that are images of the i^{th} line. Using the results of [46], one can write:

$$\langle [\mathbf{t}]_{\times} \mathbf{R} \check{\mathbf{s}}_i, \mathbf{s}_i \rangle + \langle \mathbf{R} \check{\mathbf{s}}_i, \mathbf{m}_i \rangle + \langle \mathbf{R} \check{\mathbf{m}}_i, \mathbf{s}_i \rangle = 0. \quad (32)$$

Since \mathbf{R} is known, after some calculations, one can rewrite this constraint as: $\mathbf{a}_{i,j}^T \mathbf{t} = b_{i,j}$ ⁴. Stacking $\mathbf{a}_{i,j}$ and $b_{i,j}$ for a set of $\{i, j\}$, one can compute the translation parameters as:

$$\mathbf{A} \mathbf{t} = \mathbf{b} \Rightarrow \mathbf{t} = \mathbf{A}^{\dagger} \mathbf{b}, \quad (33)$$

where \mathbf{A}^{\dagger} represents the pseudo inverse of \mathbf{A} .

To evaluate this approach, we consider the same data-set presented in the previous subsection and define pixels that are images of two 3D lines. After obtaining \mathbf{R} , we apply the method presented in this subsection. Noise was included in both the vanishing points and the pixels that are images of 3D lines (normal distribution with the standard deviation equals to the `Noise_Level` variable). Results are shown in Fig. 4(b)⁵. From these results, with the exception of the central hyperbolic mirror (in which the results deteriorate significantly with the noise), the behaviour is very similar to what happens in the previous evaluation.

³The minimal case corresponds to two image points belonging to a 3D line and one more image point in another 3D line.

⁴The elements of $\mathbf{a}_{i,j}$ and b_i , can be easily obtained after some symbolic computation.

⁵In these tests, we consider image pixels from two 3D straight lines. If more 3D lines were considered, we would have a more robust estimation.

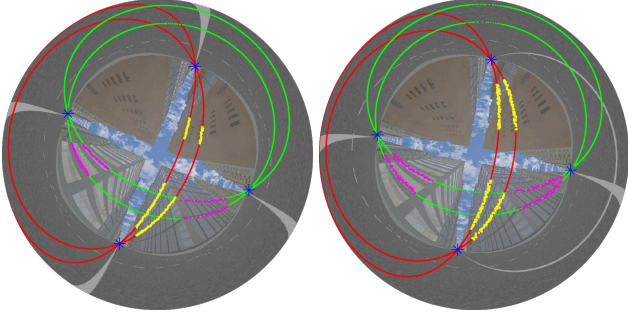


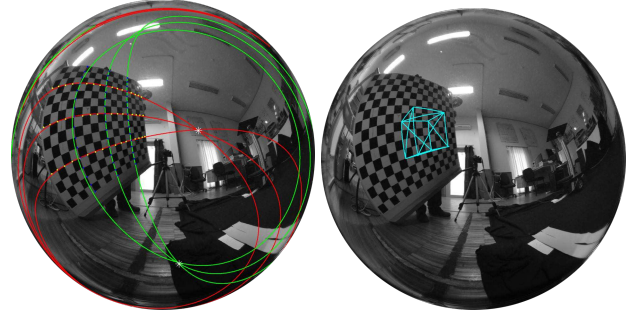
Figure 5: Images used to get the camera orientation from a sequence of two images. Curves are fitted using the yellow and magenta pixels (with a noise standard deviation of three pixels), and we match projection curves from parallel lines using the same colors in both images. We compute vanishing points from the intersection of the curves (blue points in both images), and get the correspondent directions. Then, the rotation is computed using the *Procrustes* problem.

4.3. Relative Rotation in a Simulated Environment

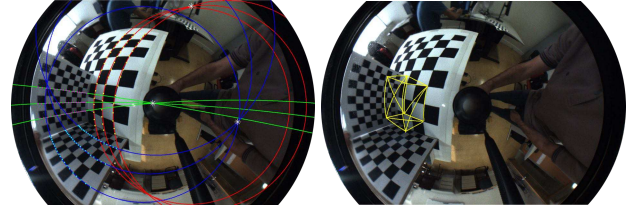
This subsection address the estimation of the rotation parameters, in a relative pose problem. This problem can be solved using vanishing points and a method similar to what was proposed in Sec. 4.2.1, assuming as known a matching of $N \geq 2$ vanishing points in a couple of images. To generate these images, we use *POV-Ray* [1]. A non-central ellipsoidal catadioptric camera system was simulated in an urban environment. We acquire images from two distinct points of view (as shown in Fig. 5).

To estimate rotation we consider the following procedure: 1) we fit parallel curves on both images considering noise in the image points of two pixels (standard deviation), see the yellow and pink points in Fig. 5; 2) compute corresponding vanishing points in both images; 3) compute directions using the method presented in Sec. 2.3; and 4) estimate the rotation that aligns both camera coordinate system using the *Procrustes*' problem. The difference between the estimated rotation matrix and the ground truth was: 0.0446, which agrees with the evaluation shown in Sec. 4.2.1.

Fitting curves in non-central catadioptric cameras involves the estimation of the coefficients of high degree polynomial equations, which are hard to recover robustly. In this paper, we consider the following procedure: 1) find an initial estimate (non-robust solution) to the 3D parameters using one of the state-of-the-art techniques; 2) fit the curves in the mirror; 3) compute the distance between the curves and the pixels that were supposed to be on the associated lines; 4) update the 3D line parameters and iterate these 4 steps till the distance is less than a threshold.



(a) Spherical catadioptric camera configuration.



(b) Hyperbolic catadioptric camera configuration.

Figure 6: Application of the proposed solution for the absolute pose problem, using both hyperbolic and spherical mirrors. On the left we show the fitting of curves in the image (using the colored points on the chessboard). Then, we compute vanishing points from the intersection of the curves with the same color, the respective directions from vanishing points, and the rotation and translation parameters. To validate the camera pose, we define a square on the chessboard (3D world) and project it on the image. The cube is drawn in the correct position (image space), which validates the computation of the camera pose.

4.4. Absolute Pose using Real Data

We consider two real non-central catadioptric camera systems using a spherical and a hyperbolic mirror. The perspective cameras were calibrated using the *Matlab* toolbox and we used the mirror parameters specified by the manufacturer. The transformation between the mirror and perspective cameras was computed using [45].

We captured chessboard images and used their corners to compute parallel lines. We consider two scenarios, one of them in which each chessboard is used to find vanishing points from a basis of the world coordinate system; and one with a single chessboard, in which we can identify two vanishing points that are two perpendicular directions in the world (i.e. the minimal case). In addition, we assume that the measurements of one of the chessboards is known, i.e. we know the coordinates of some 3D line on that chessboard and their correspondent images (pixels). We fit lines using the method presented in the previous subsection, and compute the respective vanishing points, see the results in Fig. 6. Then, we compute the pose using the method described in Sec. 4.2. After that, we define a cube in the chessboard co-

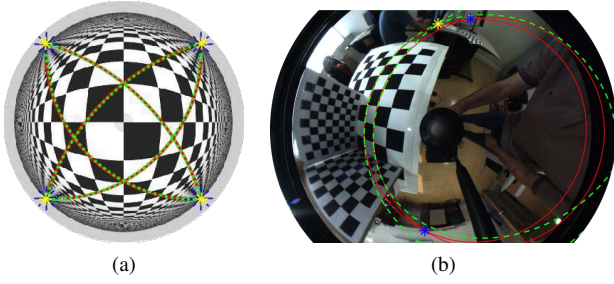


Figure 7: Comparison between the vanishing points using our method (red curves and blue points), and the approximation using the unified central model (green curves and yellow points). We show examples of POV-Ray (a) (to get a central omnidirectional camera) and real images (b), in which the camera is about 9% away from the central configuration. Regarding (b) we got a deviation of 17° between our exact direction and the one given by the unified model.

ordinates system, and project its wireframe into the image using [3, 26]. Fig. 6 proves the pose was computed correctly.

4.5. Modeling Central and Non-Central Solutions

We compare the vanishing points using the general approach with the one using central unified model (presented in the supplementary material). As expected, in the central case, the general approach gets the same solution as the unified model, as shown in Fig. 7(a). In Fig. 7(b) we test a non-central configuration with a hyperbolic mirror (the camera is about 9% away from the central configuration). We approximate the camera using the unified camera model, and plot the solutions using the derived fourth degree polynomial, drawing also the results based on the general theory derived in this paper. The considerable improvement shown by the general approach over the central unified model asserts that our theory for general catadioptric cameras is essential for accurate modeling in non-central cameras.

4.6. Vanishing Curves

We show vanishing curve estimation using a non-central hyperbolic catadioptric camera. For that purpose, we consider a camera system used in the previous experiments, and took a picture outside, where the horizon line was visible. We specifically choose a camera position almost perpendicular to the ground floor ($\mathbf{n} = [0.05 \ 0.05 \ 0.997]$), which allows us to extract directly the parameterization of the curve as derived in Sec. 3. The results are shown in Fig. 8, in which we show the intersection of both surfaces ($\Gamma(\mathbf{r})$ and $\Omega(\mathbf{r})$), and the resulting curve in the image. Qualitative validation of the vanishing curve estimation is achieved from the precise alignment of the curve with the horizon.

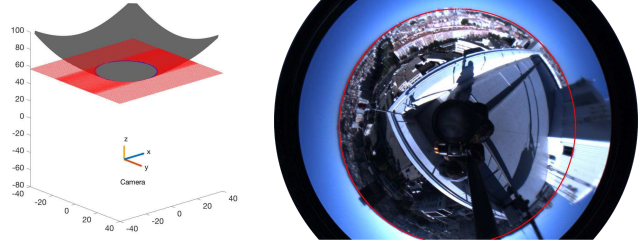


Figure 8: An image was taken from the top of a building. We measure the rotation of the camera w.r.t. the ground plane, and use this information to define its normal vector. With this vector, we apply the method derived in Sec. 3 and draw the curve (in red) in the image that can be used for partitioning it in to two distinct regions, namely the ground and the sky. At the left, we show the intersection of both surfaces that define the curve: 1) $\Gamma(\mathbf{r})$ in red; 2) and $\Omega(\mathbf{r})$ gray surface representing the mirror.

5. Discussion

We propose analytical modeling of vanishing points and vanishing curves in general omnidirectional cameras. To the best of our knowledge, there is no prior work on parametric modeling of vanishing points and vanishing curves for a taxonomy of catadioptric cameras. We propose solutions for vanishing point estimation from line directions, and line direction estimation from vanishing points. The proposed methods differ in terms of computational complexity. The computation of a vanishing point given a direction of a 3D line consists in solving for the roots of one polynomial of degree at most 10 and two back substitutions, as presented in Sec. 2.2. The problem of computing a direction from a vanishing point corresponds to three polynomial evaluations described in Sec. 2.3, which can be computed analytically. The proposed methods are evaluated in both simulations with noise and real data. In future, we plan to use the estimated vanishing points and vanishing curves in the context of large-scale line-based 3D modeling of Manhattan scenes using catadioptric cameras.

Acknowledgments

P. Miraldo is with the Institute for Systems and Robotics (ISR/IST), LARSyS, Instituto Superior Técnico, Univ Lisboa. F. Eiras was with ISR/IST and he is now with Linacre College of the University of Oxford. S. Ramalingam acknowledges the support from Mitsubishi Electric Research Labs (MERL). This work was partially supported by the Portuguese projects [UID/EEA/50009/2013] & [PTDC/EEI-SII/4698/2014] and grant [SFRH/BPD/111495/2015]. We thank the reviewers and area chairs for valuable feedback.

References

- [1] Persistence of Vision Raytracer (POV-Ray). <http://www.povray.org/>. [Accessed March 29, 2018].
- [2] A. Agrawal, Y. Taguchi, and S. Ramalingam. Analytical forward projection for axial non-central dioptric and catadioptric cameras. In *European Conf. Computer Vision (ECCV)*, pages 129–143, 2010.
- [3] A. Agrawal, Y. Taguchi, and S. Ramalingam. Beyond alhazen’s problem: Analytical projection model for non-central catadioptric cameras with quadric mirrors. In *IEEE Conf. Computer Vision and Pattern Recognition (CVPR)*, pages 2993–3000, 2011.
- [4] M. E. Antone and S. Teller. Automatic recovery of relative camera rotations for urban scenes. In *IEEE Conf. Computer Vision and Pattern Recognition (CVPR)*, pages 282–289, 2000.
- [5] M. Antunes and J. P. Barreto. A global approach for the detection of vanishing points and mutually orthogonal vanishing directions. In *IEEE Conf. Computer Vision and Pattern Recognition (CVPR)*, pages 1336–1343, 2013.
- [6] M. Antunes, J. P. Barreto, and D. Aouada. Unsupervised vanishing point detection and camera calibration from a single manhattan image with radial distortion. In *IEEE Conf. Computer Vision and Pattern Recognition (CVPR)*, pages 4288–4296, 2017.
- [7] S. Baker and S. Nayar. A theory of single-viewpoint catadioptric image formation. *Int’l J. Computer Vision (IJCV)*, 35(2):175–196, 1999.
- [8] S. Baker and S. K. Nayar. A theory of catadioptric image formation. In *IEEE Int’l Conf. Computer Vision (ICCV)*, pages 35–42, 1998.
- [9] J. P. Barreto and H. Araujo. Issues on the geometry of central catadioptric image formation. In *IEEE Conf. Computer Vision and Pattern Recognition (CVPR)*, volume 2, pages 422–427, 2001.
- [10] J. P. Barreto and H. Araujo. Issues on the geometry of central catadioptric image formation. In *IEEE Conf. Computer Vision and Pattern Recognition (CVPR)*, volume 2, pages 422–427, 2001.
- [11] J. C. Bazin, C. Démonceaux, P. Vasseur, and I. Kweon. Rotation estimation and vanishing point extraction by omnidirectional vision in urban environment. *Int’l J. Robotics Research (IJRR)*, 31(1):63–81, 2012.
- [12] J. C. Bazin and M. Pollefeys. 3-line ransac for orthogonal vanishing point detection. In *IEEE/RSJ Int’l Conf. Intelligent Robots and Systems (IROS)*, pages 4282–4287, 2012.
- [13] J. C. Bazin, Y. Seo, C. Démonceaux, P. Vasseur, K. Ikeuchi, I. Kweon, and M. Pollefeys. Globally optimal line clustering and vanishing point estimation in manhattan world. In *IEEE Conf. Computer Vision and Pattern Recognition (CVPR)*, pages 638–645, 2012.
- [14] H. Ben-Said, J. Stéphant, and O. Labbani-Igbida. Sensor-based control using finite time observer of visual signatures: Application to corridor following. In *IEEE/RSJ Int’l Conf. Intelligent Robots and Systems (IROS)*, pages 418–423, 2016.
- [15] J. Bermudez-Cameo, G. Lopez-Nicolas, and J. J. Guerrero. Line-images in cone mirror catadioptric systems. In *IEEE Int’l Conf. Pattern Recognition (ICPR)*, pages 2083–2088, 2014.
- [16] J. Bermudez-Cameo, O. Saurer, G. Lopez-Nicolas, J. J. Guerrero, and M. Pollefeys. Exploiting line metric reconstruction from non-central circular panoramas. *Pattern Recognition Letters (PR-L)*, 94:30–37, 2017.
- [17] M. Bosse, R. Rikoski, J. Leonard, and S. Teller. Vanishing points and 3d lines from omnidirectional video. In *IEEE Int’l Conf. Image Processing (ICIP)*, volume 3, pages 513–516, 2003.
- [18] C. Brauer-Burchardt and K. Voss. A new algorithm to correct fisheye and strong wide-angle-lens-distortion from single images. In *IEEE Int’l Conf. Image Processing (ICIP)*, volume 1, pages 225–228, 2001.
- [19] V. Caglioti and S. Gasparini. On the localization of straight lines in 3d space from single 2d images. In *IEEE Conf. Computer Vision and Pattern Recognition (CVPR)*, volume 1, pages 1129–1134, 2005.
- [20] V. Caglioti, S. Gasparini, and P. Taddei. Methods for space line localization from single catadioptric images: new proposals and comparisons. In *IEEE Int’l Conf. Computer Vision (ICCV)*, pages 1–6, 2007.
- [21] F. Camposeco and M. Pollefeys. Using vanishing points to improve visual-inertial odometry. In *IEEE Int’l Conf. Robotics and Automation (ICRA)*, pages 5219–5225, 2015.
- [22] B. Caprile and V. Torre. Using vanishing points for camera calibration. *Int’l J. Computer Vision (IJCV)*, 4(2):127–139, 1990.
- [23] R. Cipolla, T. Drummond, and D. Robertson. Camera calibration from vanishing points in images of architectural scenes. In *British Machine Vision Conf. (BMVC)*, pages 382–391, 1999.
- [24] A. Criminisi, I. Reid, and A. Zisserman. Single view metrology. *Int’l J. Computer Vision (IJCV)*, 40(2):123–148, 2000.
- [25] P. Denis, J. H. Elder, and F. J. Estrada. Efficient edge-based methods for estimating manhattan frames in urban imagery. In *European Conf. Computer Vision (ECCV)*, pages 197–210, 2008.
- [26] T. Dias, P. Miraldo, N. Goncalves, and P. Lima. Augmented reality on robot navigation using non-central catadioptric cameras. In *IEEE/RSJ Int’l Conf. Intelligent Robots and Systems (IROS)*, pages 4999–5004, 2015.
- [27] Y. Ding, J. Yu, and P. Sturm. Recovering specular surfaces using curved line images. In *IEEE Conf. Computer Vision and Pattern Recognition (CVPR)*, pages 2326–2333, 2009.
- [28] W. Duan, H. Zhang, and N. M. Allinson. Relating vanishing points to catadioptric camera calibration. In *Proc. SPIE (Intelligent Robots and Computer Vision XXX: Algorithms and Techniques)*, volume 8662, page 9, 2013.
- [29] S. Gasparini and V. Caglioti. Line localization from single catadioptric images. *Int’l J. Computer Vision (IJCV)*, 94(3):361–374, 2011.
- [30] C. Geyer and K. Daniilidis. A unifying theory for central panoramic systems and practical implications. In *European Conf. Computer Vision (ECCV)*, pages 445–461, 2000.

- [31] C. Geyer and K. Daniilidis. A unifying theory for central panoramic systems and practical implications. In *European Conf. Computer Vision (ECCV)*, pages 445–461, 2000.
- [32] N. Gonaçalves. On the reflection point where light reflects to a known destination on quadratic surfaces. *Optics Letters*, 35(2):100–102, 2010.
- [33] E. Guillou, D. Meneveau, E. Maisel, and K. Bouatouch. Using vanishing points for camera calibration and coarse 3d reconstruction from a single image. *The Visual Computer*, 16(7):396–410, 2000.
- [34] F. Kluger, H. Ackermann, M. Y. Yang, and B. Rosenhahn. Deep learning for vanishing point detection using an inverse gnomonic projection. In *German Conf. Pattern Recognition (GCPR)*, pages 17–28, 2017.
- [35] J. Kosecka and W. Zhang. Video compass. In *European Conf. Computer Vision (ECCV)*, pages 476–490, 2002.
- [36] D. Lanman, M. Wachs, G. Taubin, and F. Cukierman. Reconstructing a 3d line from a single catadioptric image. In *Int'l Symposium 3D Data Processing, Visualization, and Transmission (3DPVT)*, pages 89–96, 2006.
- [37] D. C. Lee, M. Hebert, and T. Kanade. Geometric reasoning for single image structure recovery. In *IEEE Conf. Computer Vision and Pattern Recognition (CVPR)*, pages 2136–2143, 2009.
- [38] B. Li, K. Peng, X. Ying, and H. Zha. Vanishing point detection using cascaded 1d hough transform from single images. *Pattern Recognition Letters (PR-L)*, 22(1):1–8, 2012.
- [39] A. T. Martins, P. M. Q. Aguiar, and M. A. T. Figueiredo. Orientation in manhattan: equiprojective classes and sequential estimation. *IEEE Trans. Pattern Analysis and Machine Intelligence (T-PAMI)*, 27(5):822–827, 2005.
- [40] C. Mei and P. Rives. Single view point omnidirectional camera calibration from planar grids. In *IEEE Int'l Conf. Robotics and Automation (ICRA)*, pages 3945–3950, 2007.
- [41] B. Micusik and T. Pajdla. Structure from motion with wide circular field of view cameras. *IEEE Trans. Pattern Analysis and Machine Intelligence (T-PAMI)*, 28(7):1135–1149, 2006.
- [42] S. K. Nayar. Catadioptric omnidirectional camera. In *IEEE Conf. Computer Vision and Pattern Recognition (CVPR)*, pages 480–488, 1997.
- [43] R. Okada, Y. Taniguchi, K. Furukawa, and K. Onoguchi. Obstacle detection using projective invariant and vanishing lines. In *IEEE Int'l Conf. Computer Vision (ICCV)*, volume 1, pages 330–337, 2003.
- [44] P. Parodi and G. Piccioli. 3d shape reconstruction by using vanishing points. *IEEE Trans. Pattern Analysis and Machine Intelligence (T-PAMI)*, 18(2):211–217, 1996.
- [45] L. Perdigoto and H. Araujo. Calibration of mirror position and extrinsic parameters in axial non-central catadioptric systems. *Computer Vision and Image Understanding (CVIU)*, 117(8):909–921, 2013.
- [46] R. Pless. Using many cameras as one. In *IEEE Conf. Computer Vision and Pattern Recognition (CVPR)*, volume 2, pages 587–593, 2003.
- [47] H. Pottmann and J. Wallner. *Computational Line Geometry*. Springer-Verlag Berlin Heidelberg, 1 edition, 2001.
- [48] S. Ramalingam and M. Brand. Lifting 3d manhattan lines from a single image. In *IEEE Int'l Conf. Computer Vision (ICCV)*, pages 497–504, 2013.
- [49] P. Rives and J. Azinheira. Linear structures following by an airship using vanishing points and horizon line in a visual servoing scheme. In *IEEE Int'l Conf. Robotics and Automation (ICRA)*, volume 1, pages 255–260, 2004.
- [50] P. H. Schonemann. A generalized solution of the orthogonal procrustes problem. *Psychometrika*, 31(1):1–10, 1966.
- [51] R. Schuster, N. Ansari, and A. Bani-Hashemi. Steering a robot with vanishing points. *IEEE Trans. Robotics and Automation (T-RA)*, 9(4):491–498, 1993.
- [52] A. E. R. Shabayek, C. Demonceaux, O. Morel, and D. Fofi. Vision based uav attitude estimation: Progress and insights. *J. Intelligent & Robotic Systems*, 65(4):295–308, 2012.
- [53] R. Swaminathan, M. D. Grossberg, and S. K. Nayar. Caustics of catadioptric cameras. In *IEEE Int'l Conf. Computer Vision (ICCV)*, volume 2, pages 2–9, 2001.
- [54] J. P. Tardif. Non-iterative approach for fast and accurate vanishing point detection. In *IEEE Int'l Conf. Computer Vision (ICCV)*, pages 1250–1257, 2009.
- [55] L. L. Wang and W. H. Tsai. Camera calibration by vanishing lines for 3-d computer vision. *IEEE Trans. Pattern Analysis and Machine Intelligence (T-PAMI)*, 13(4):370–376, 1991.
- [56] L. L. Wang and W. H. Tsai. Computing camera parameters using vanishing-line information from a rectangular parallelepiped. *Machine Vision and Applications*, 3(3):129–141, 1991.
- [57] H. Wildenauer and A. Hanbury. Robust camera self-calibration from monocular images of manhattan worlds. In *IEEE Conf. Computer Vision and Pattern Recognition (CVPR)*, pages 2831–2838, 2012.
- [58] Y. Xu, S. Oh, and A. Hoogs. A minimum error vanishing point detection approach for uncalibrated monocular images of man-made environments. In *IEEE Conf. Computer Vision and Pattern Recognition (CVPR)*, pages 1376–1383, 2013.
- [59] W. Yang, Y. Li, J. Ye, S. S. Young, , and J. Yu. Coplanar common points in non-centric cameras. In *European Conf. Computer Vision (ECCV)*, pages 220–233, 2014.
- [60] X. Ying and Z. Hu. Can we consider central catadioptric cameras and fisheye cameras within a unified imaging model. In *European Conf. Computer Vision (ECCV)*, pages 442–455, 2004.